

# Foynes to Limerick Road (including Adare Bypass)

## Appendix A to Brief of Evidence The Landscape

Mark Boyle, MLArch, MILI  
Director, Murray & Associates



Rialtas  
na hÉireann  
Government  
of Ireland

Tionscadal Éireann  
Project Ireland  
2040



Ag Roinn Iompair  
Turasóireachta agus Spóirt  
Department of Transport,  
Tourism and Sport



Bainisteoir Comais Éireann  
Transport Infrastructure Ireland



Comhairle Cathrach  
& Contae Lúimnigh  
Limerick City  
& County Council

ROD  
AECOM



## **3. EXECUTIVE SUMMARY**

### 3.1 Overview of Landscape and Visual Aspects



### 3. EXECUTIVE SUMMARY

#### 3.1 Overview of Landscape and Visual Aspects



VP25  
View east on the N69 at Robertstown  
EIAR Volume 5



### 3. EXECUTIVE SUMMARY

#### 3.1 Overview of Landscape and Visual Aspects



VP6  
View northeast from Milltown Cashel of  
Deel River Crossing  
EIAR Volume 5



### 3. EXECUTIVE SUMMARY

#### 3.1 Overview of Landscape and Visual Aspects



VP1  
View east from Knockpatrick Graveyard  
EIAR Volume 5



### 3. EXECUTIVE SUMMARY

#### 3.1 Overview of Landscape and Visual Aspects



VP13  
View south on L-1203 at Rathkeale  
Graveyard  
EIAR Volume 5



### 3. EXECUTIVE SUMMARY

#### 3.1 Overview of Landscape and Visual Aspects



VP4  
View west on the N69 at Robertstown  
(receptor A02-009)  
EIAR Volume 5



VP22  
View on L-8024 at Clonshire Beg (south)  
(receptor D57-007)  
EIAR Volume 5



### 3. EXECUTIVE SUMMARY

#### 3.1 Overview of Landscape and Visual Aspects



VP21  
View north on L-8024 at Clonshire Beg  
(receptor D57-008)  
EIAR Volume 5



VP24  
View north on L-1422 at Tuogh  
(receptor D59-002)  
EIAR Volume 5



### 3. EXECUTIVE SUMMARY

#### 3.1 Overview of Landscape and Visual Aspects



#### **Adare Village**

– Photograph by the author taken in January 2021, illustrating the streetscape of the village with low traffic and no HGV's



## **4. RESPONSES TO SUBMISSIONS**

### 4.2 Type and Extent of Landscape Mitigation Measures



## 4.2 Type and Extent of Landscape Mitigation Measures





4. RESPONSES TO SUBMISSIONS

4.2 Type and Extent of Landscape Mitigation Measures

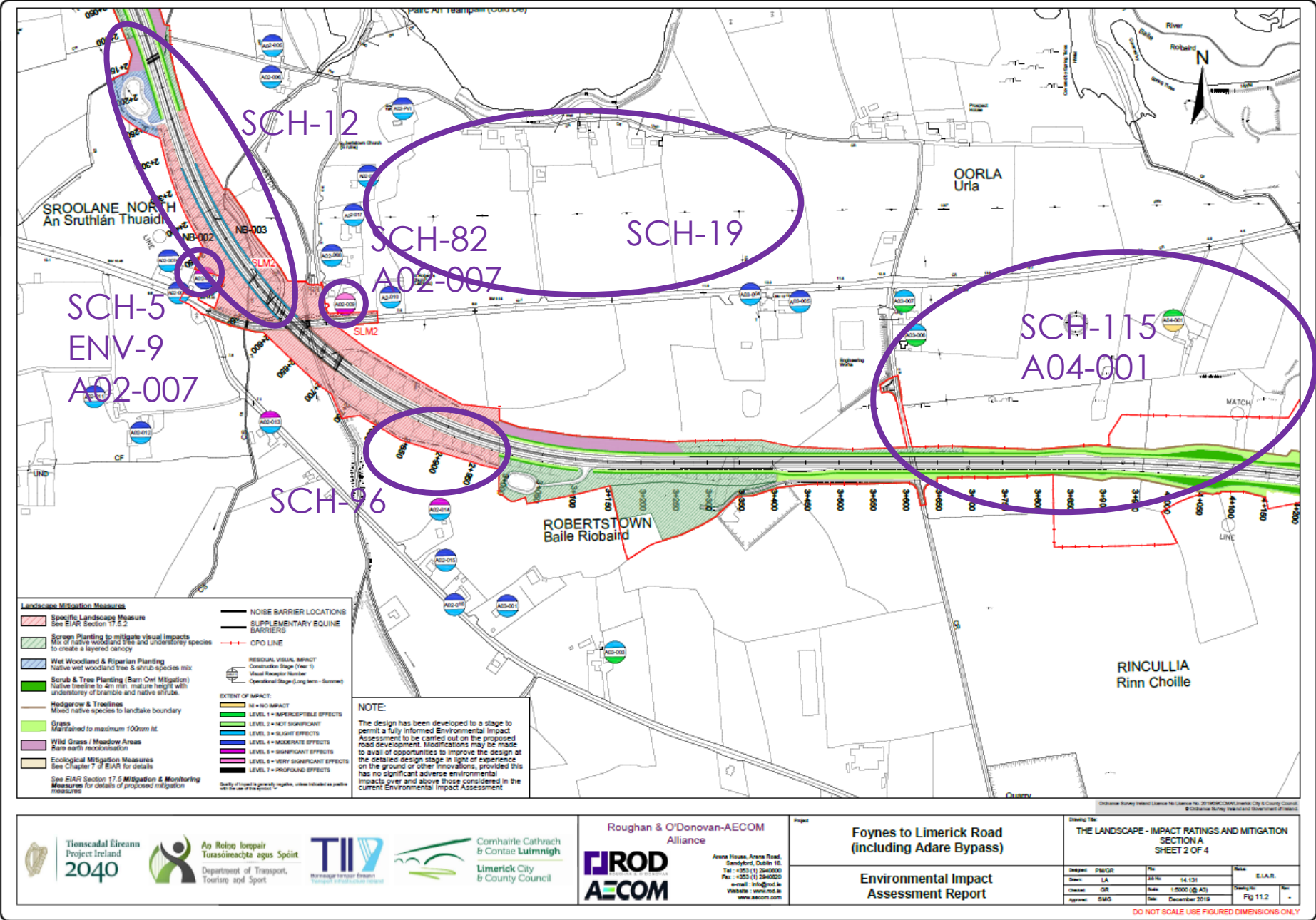


Fig. 11.2  
EIA Volume 3



## 4.2 Type and Extent of Landscape Mitigation Measures





4. RESPONSES TO SUBMISSIONS

4.2 Type and Extent of Landscape Mitigation Measures

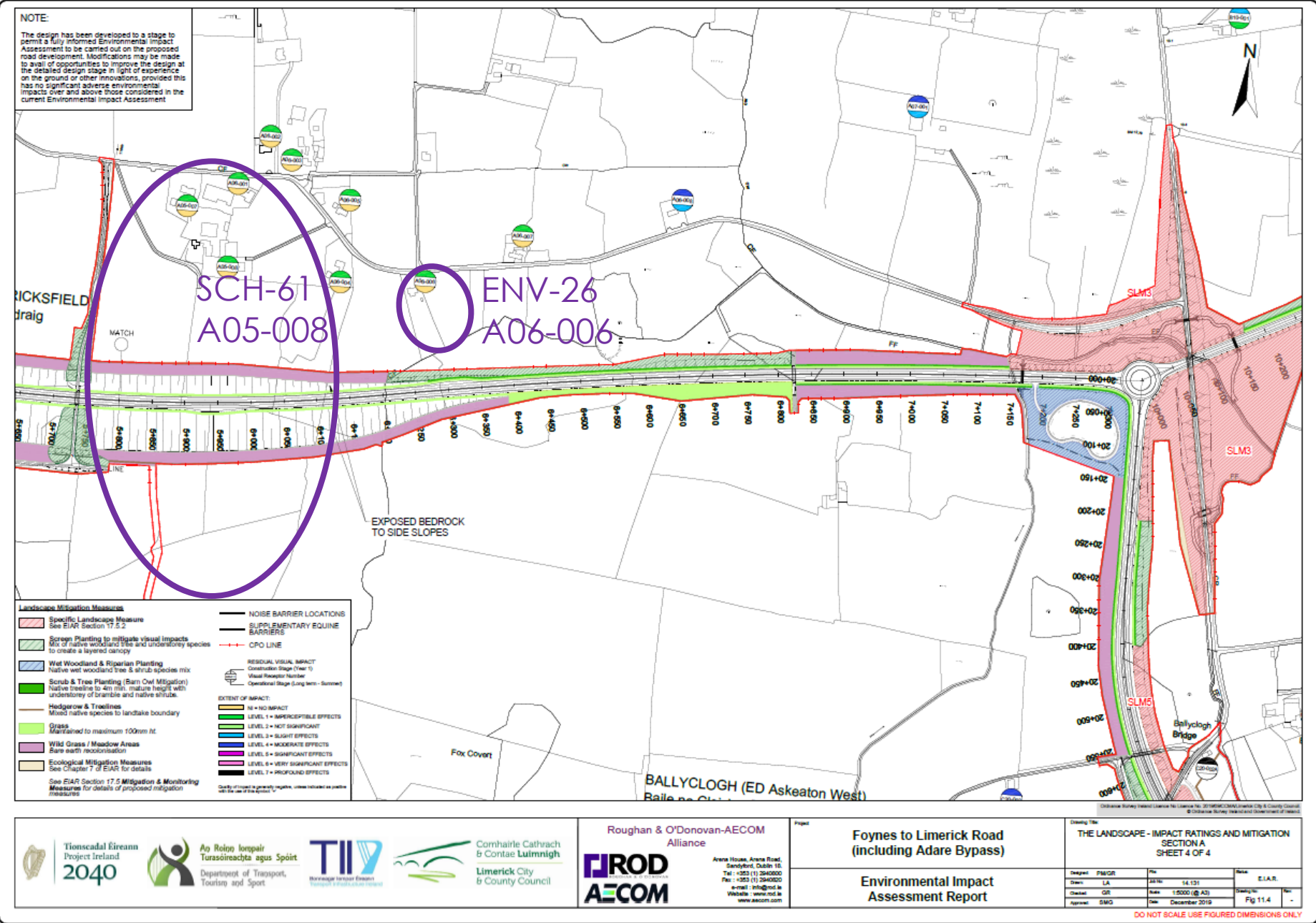


Fig. 11.4  
EIA Volume 3



4. RESPONSES TO SUBMISSIONS

4.2 Type and Extent of Landscape Mitigation Measures

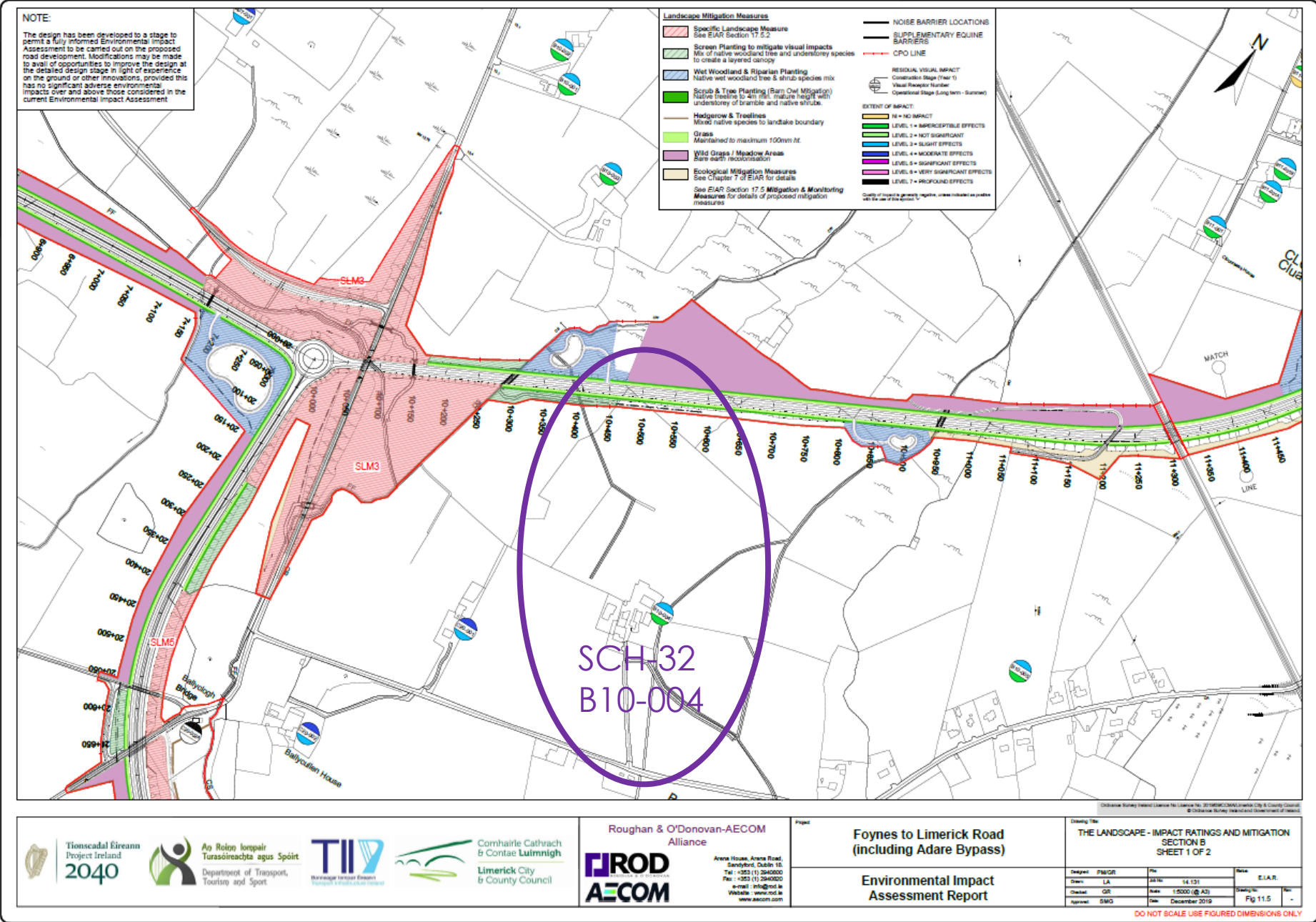


Fig. 11.5  
EIAI Volume 3



4. RESPONSES TO SUBMISSIONS

4.2 Type and Extent of Landscape Mitigation Measures

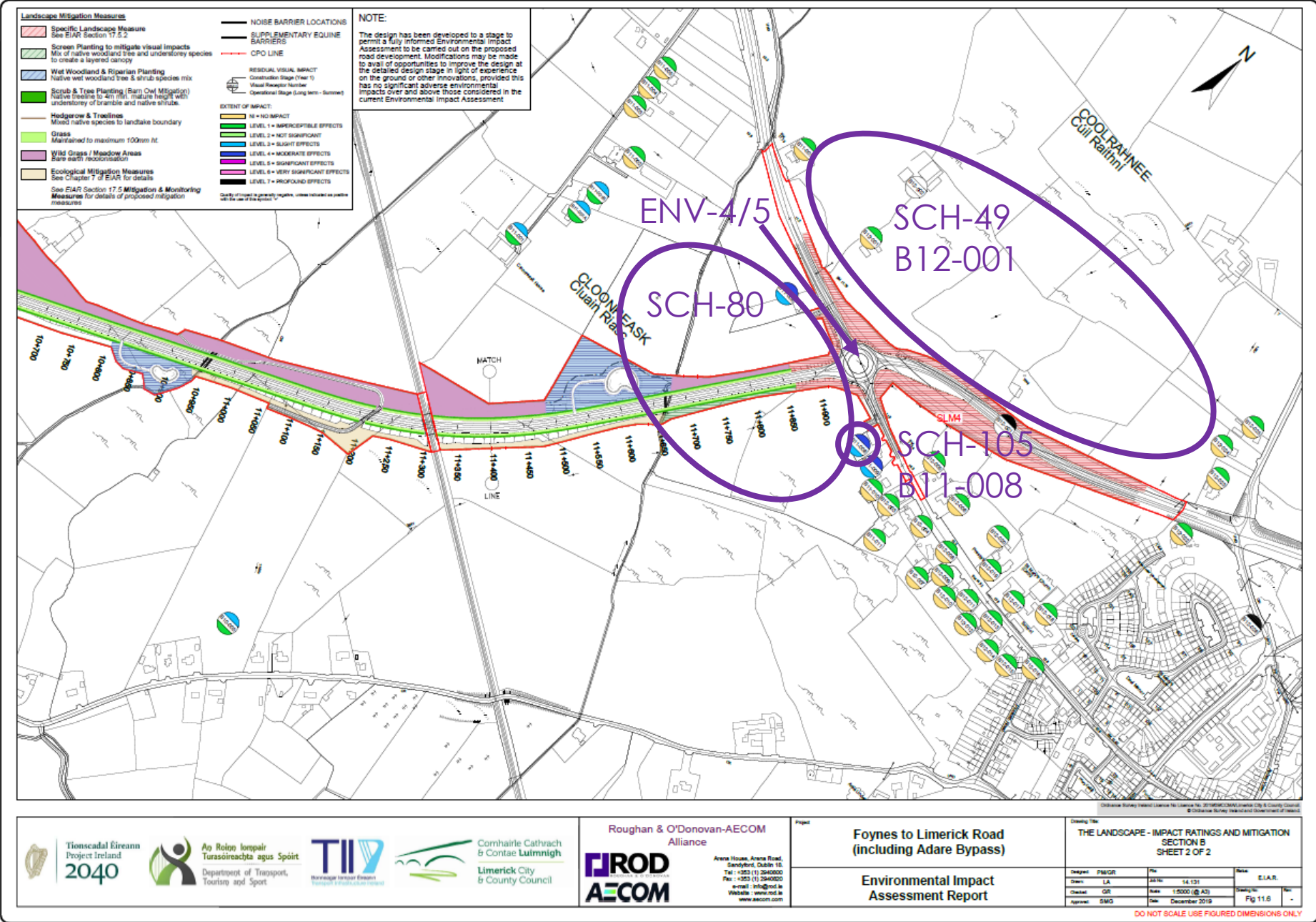


Fig. 11.6  
EIA Volume 3



4. RESPONSES TO SUBMISSIONS

4.2 Type and Extent of Landscape Mitigation Measures

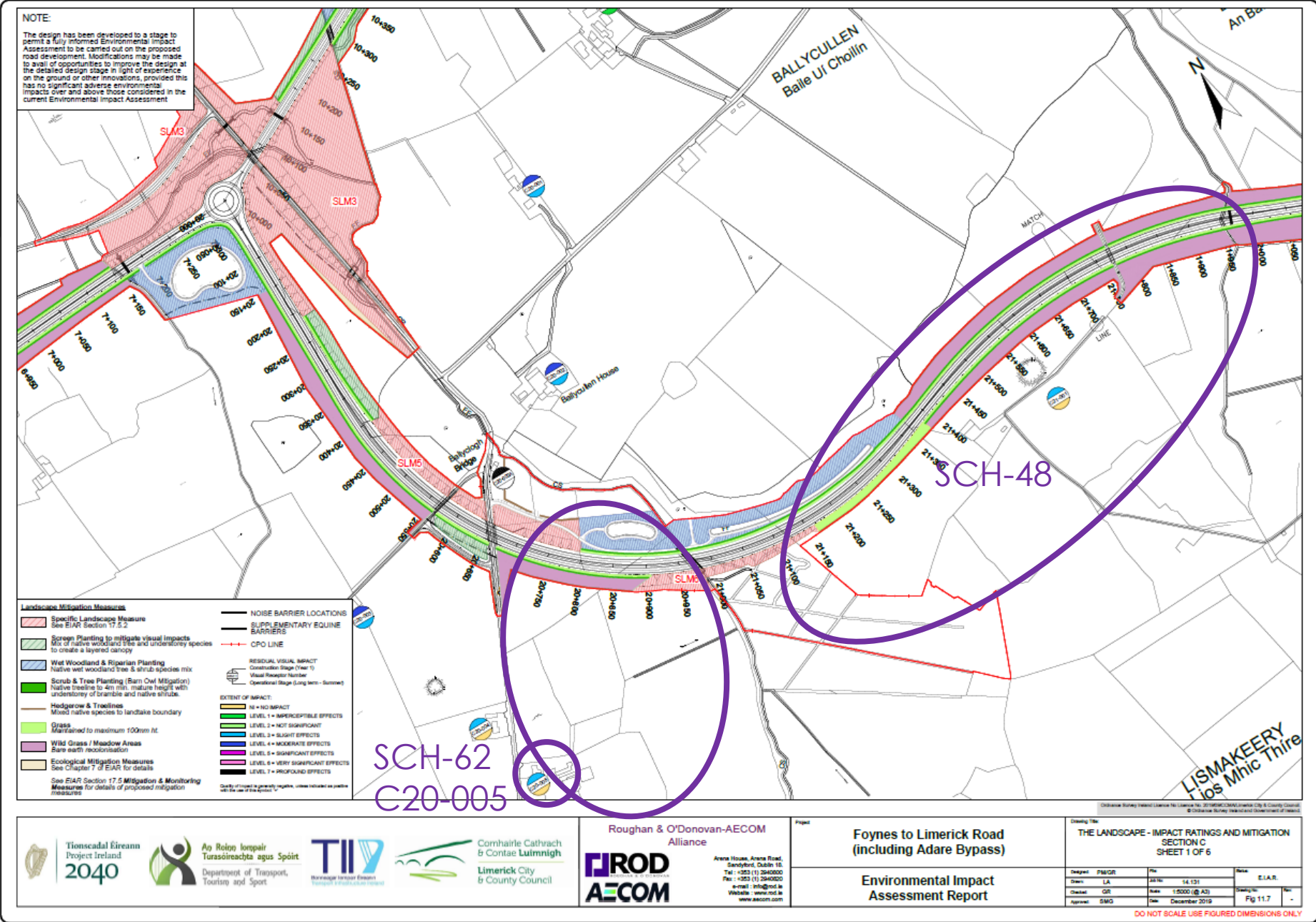


Fig. 11.7  
EIA Volume 3



4. RESPONSES TO SUBMISSIONS

4.2 Type and Extent of Landscape Mitigation Measures

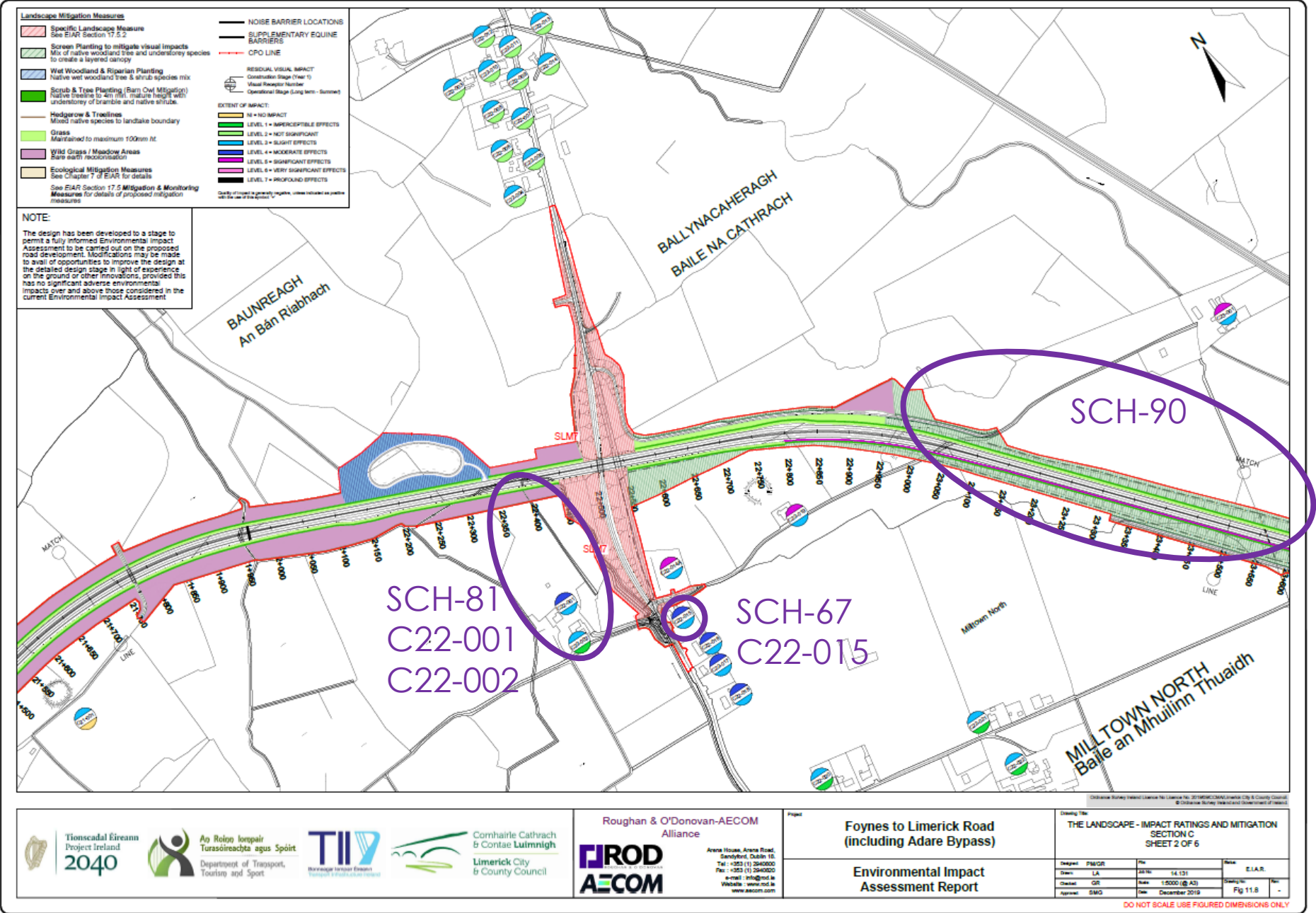


Fig. 11.8  
EIA Volume 3



## 4.2 Type and Extent of Landscape Mitigation Measures





## 4.2 Type and Extent of Landscape Mitigation Measures





## 4.2 Type and Extent of Landscape Mitigation Measures





4. RESPONSES TO SUBMISSIONS

4.2 Type and Extent of Landscape Mitigation Measures

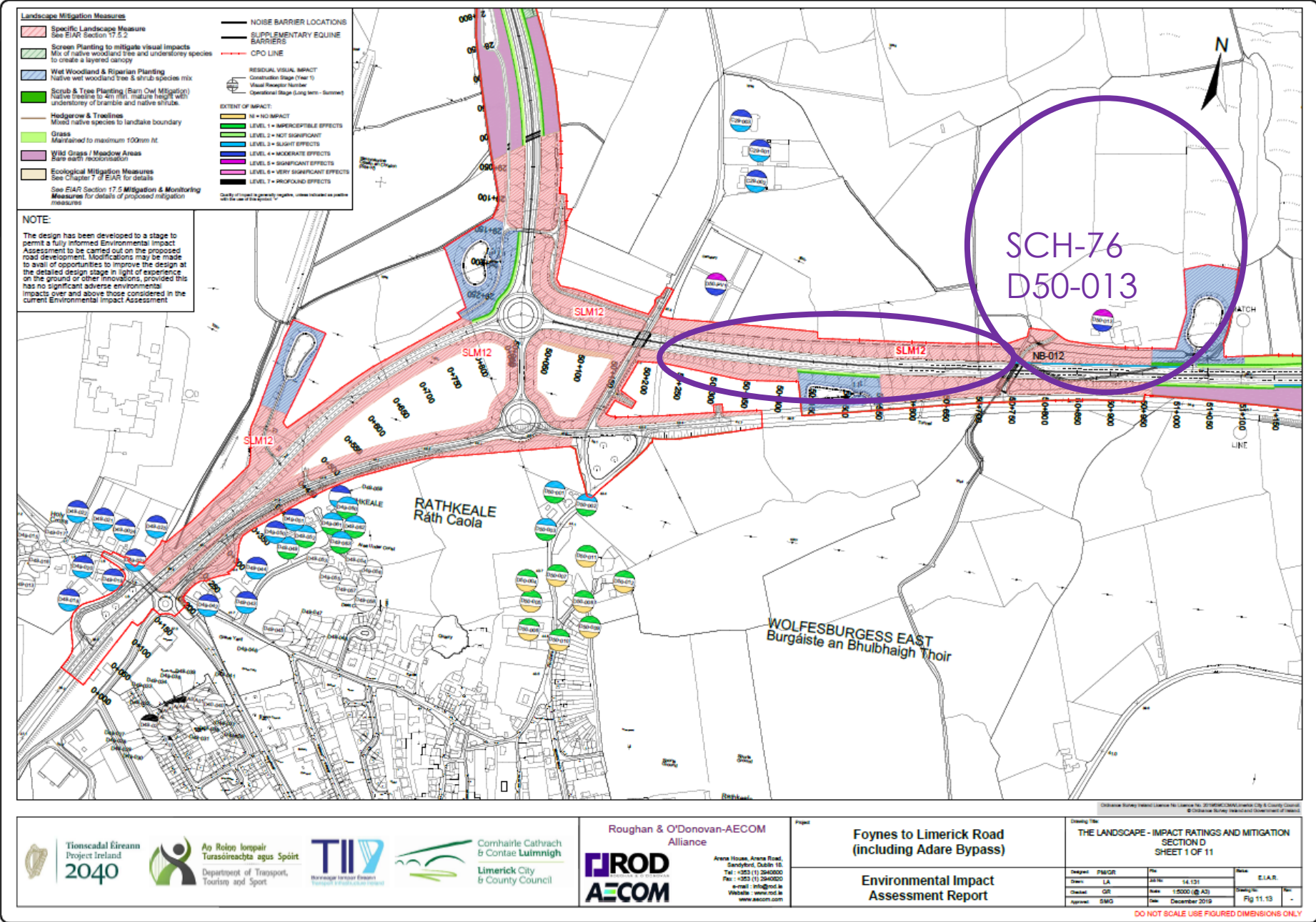
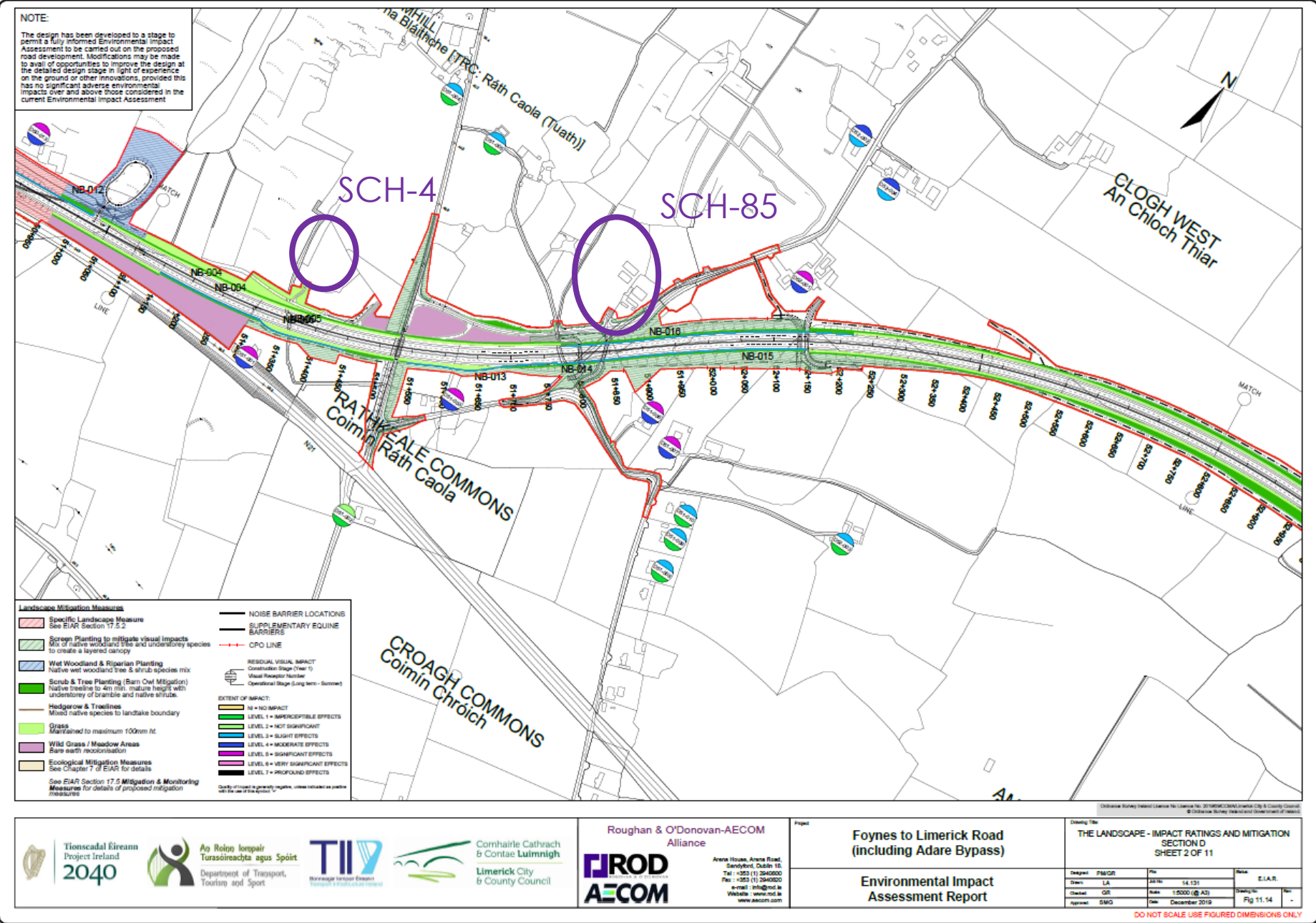


Fig. 11.13  
EIA Volume 3



4. RESPONSES TO SUBMISSIONS

4.2 Type and Extent of Landscape Mitigation Measures





4. RESPONSES TO SUBMISSIONS

4.2 Type and Extent of Landscape Mitigation Measures

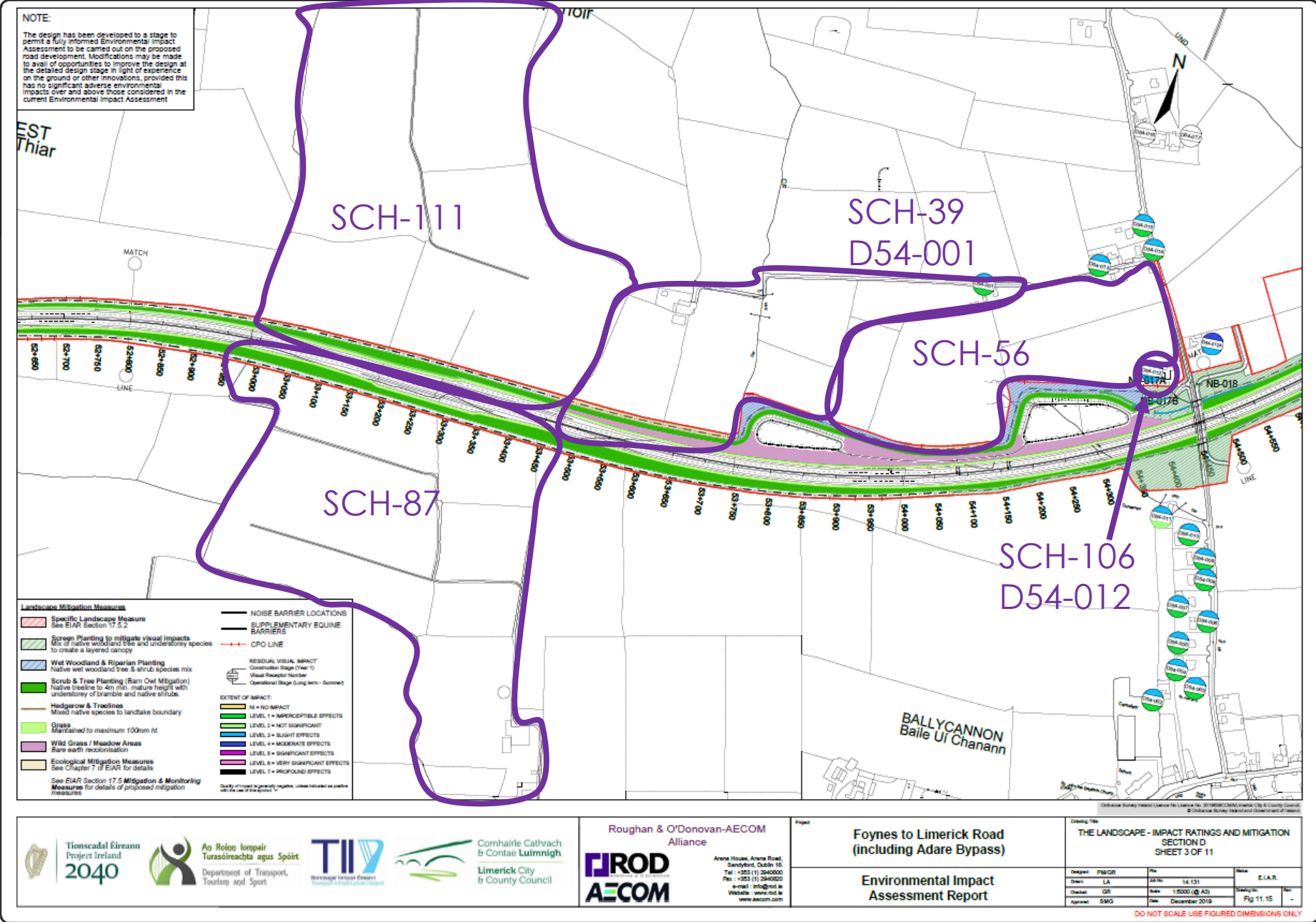


Fig. 11.15  
EIA Volume 3



4. RESPONSES TO SUBMISSIONS

4.2 Type and Extent of Landscape Mitigation Measures

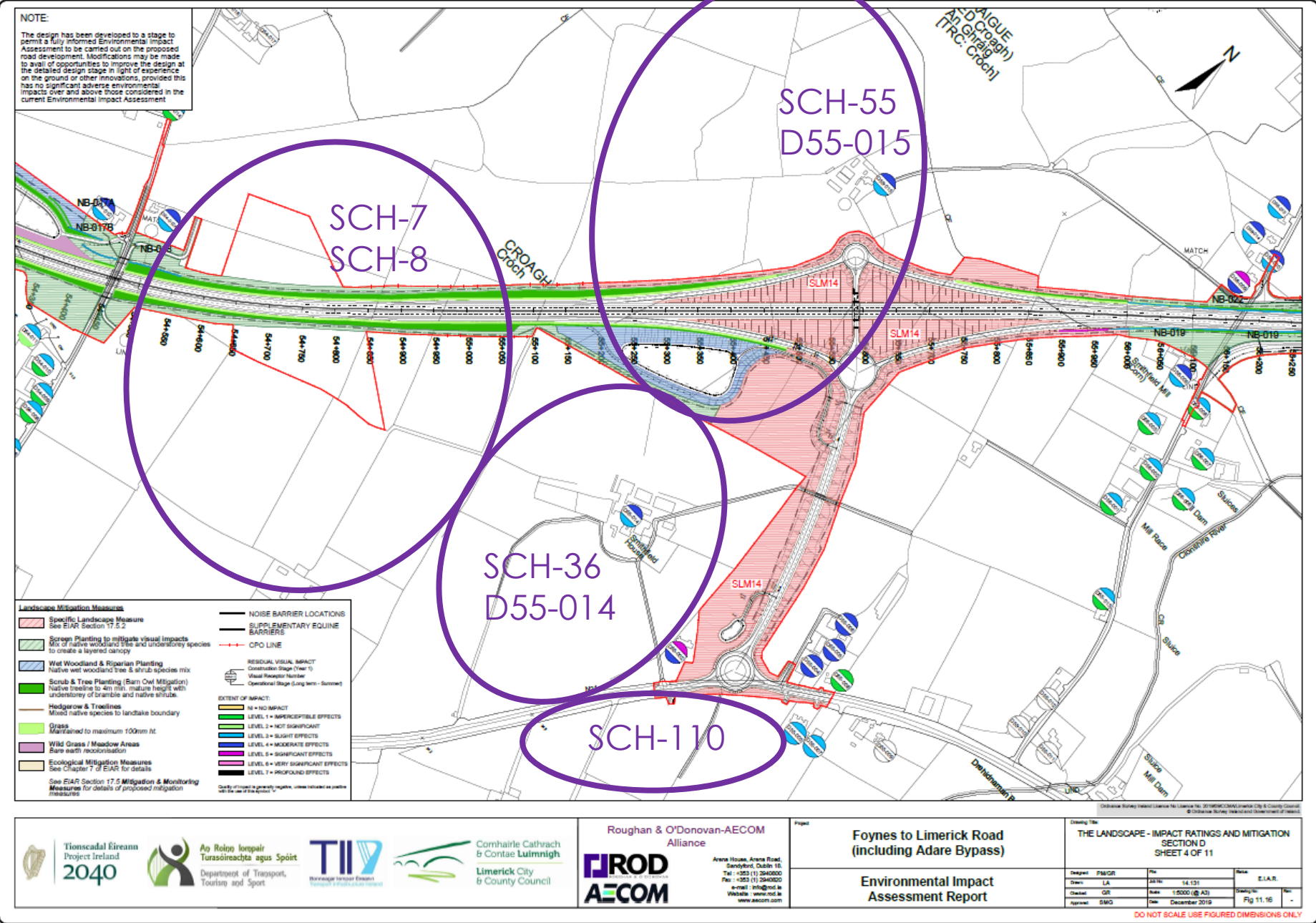


Fig. 11.16  
EIA Volume 3



Existing View



Montage: Pre-Mitigation View



Montage: Post-Mitigation View



#### 4. RESPONSES TO SUBMISSIONS

4.2 Type and  
Extent of  
Landscape  
Mitigation  
Measures

VP17  
Aerial view northeast of  
Croagh Junction  
EIAR Volume 5



4. RESPONSES TO SUBMISSIONS

4.2 Type and Extent of Landscape Mitigation Measures

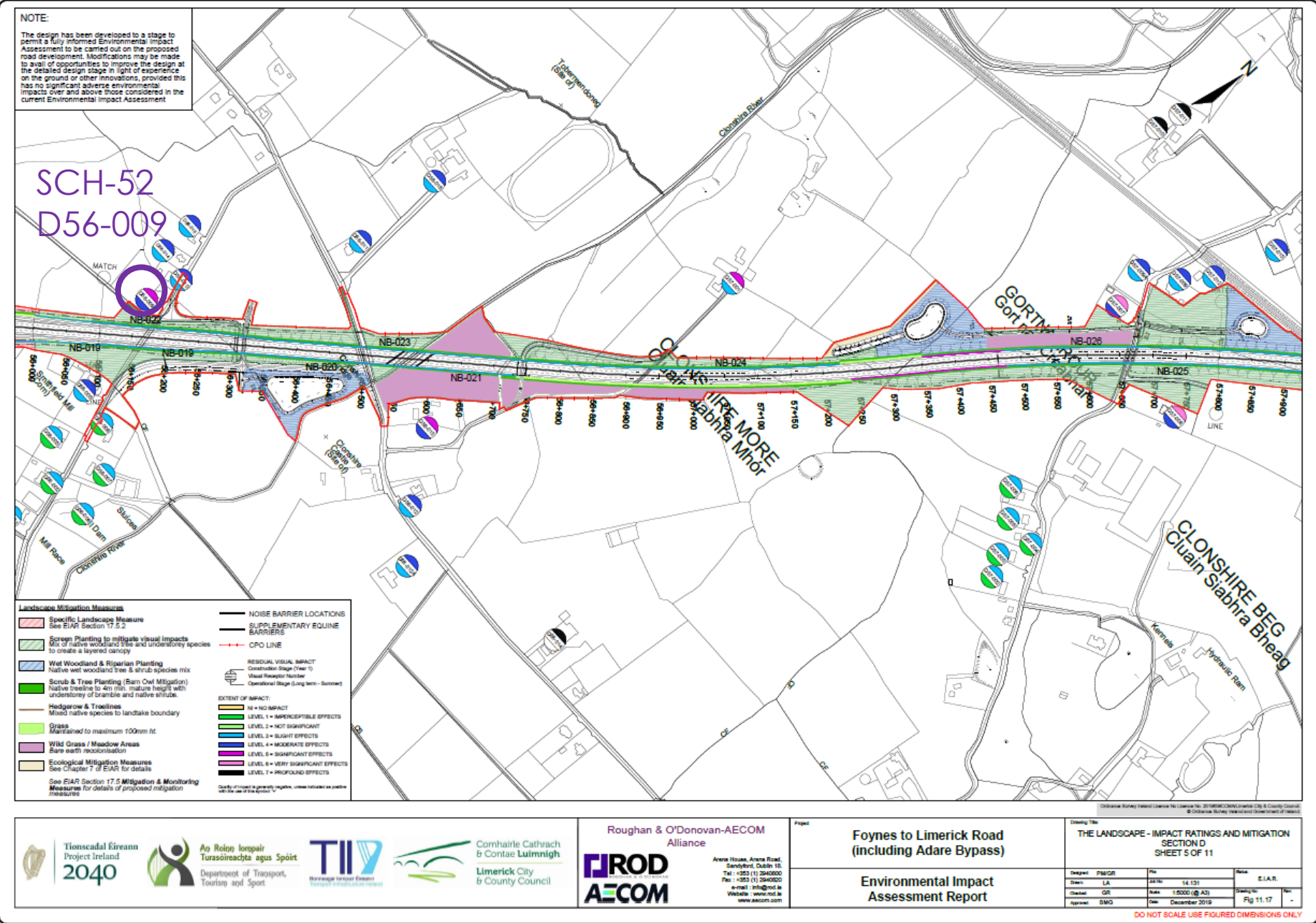


Fig. 11.17  
EIA Volume 3



## 4.2 Type and Extent of Landscape Mitigation Measures





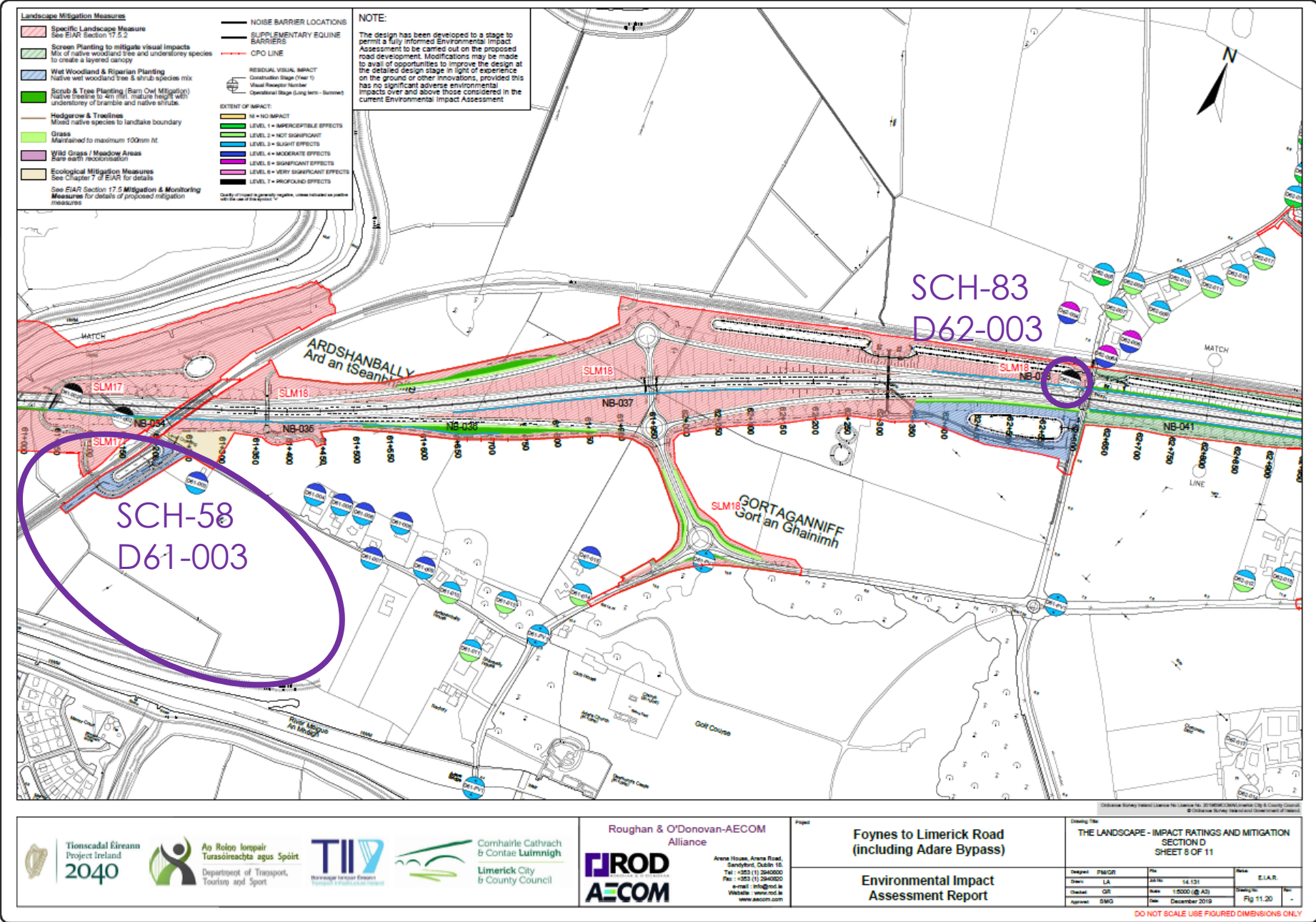
## 4.2 Type and Extent of Landscape Mitigation Measures





4. RESPONSES TO SUBMISSIONS

4.2 Type and Extent of Landscape Mitigation Measures





## **4. RESPONSES TO SUBMISSIONS**

4.3.5 Landscape / Visual Effects on Properties



### 4.3.3 Concern re. Privacy





#### 4.3.4 Concern re. Sunlight



Fig. 11.18  
ElAR Volume 3



4. RESPONSES TO SUBMISSIONS

4.3.5 Landscape / Visual Effects on Properties

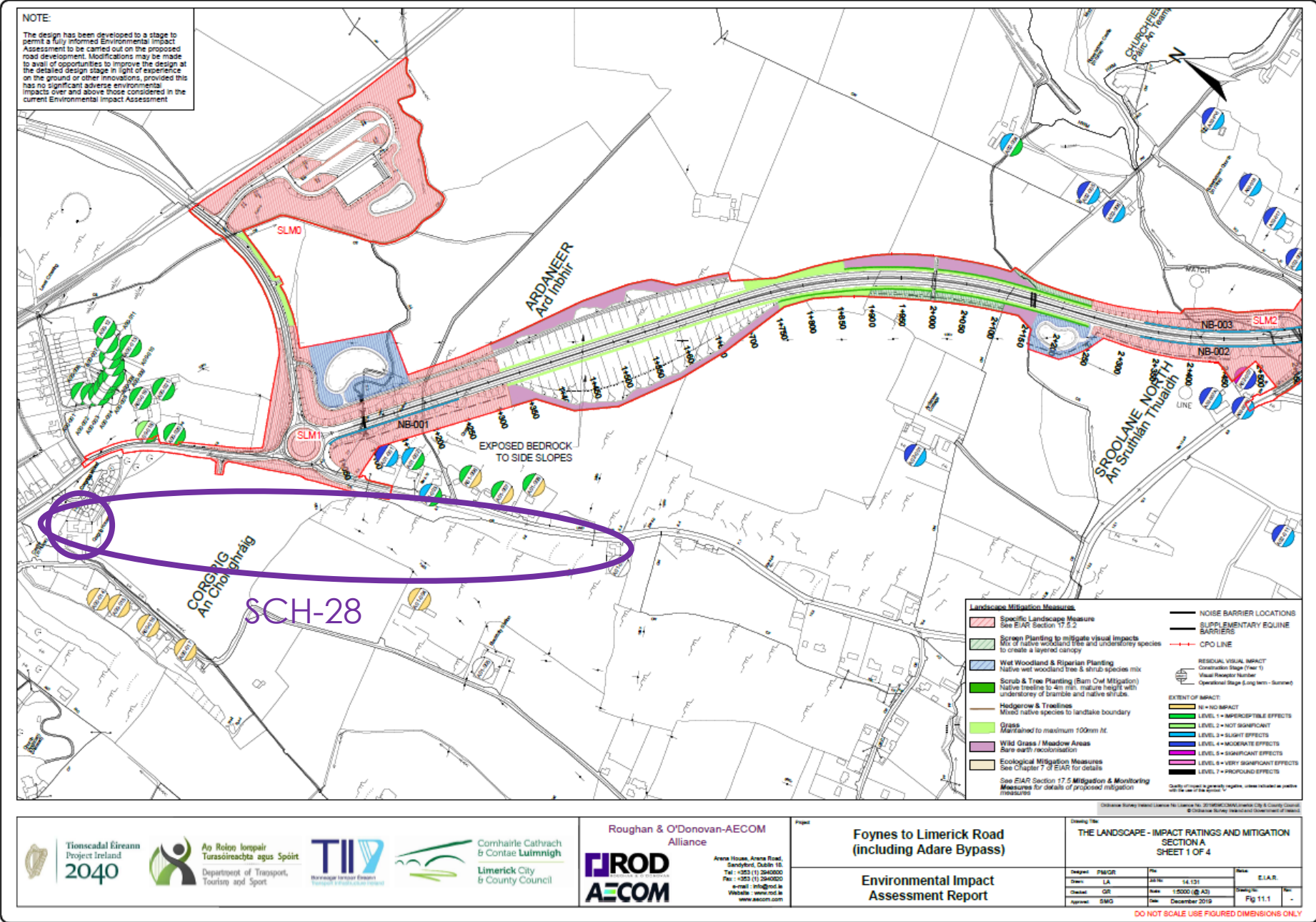


Fig. 11.1  
EIA Volume 3



4. RESPONSES TO SUBMISSIONS

4.3.5 Landscape / Visual Effects on Properties

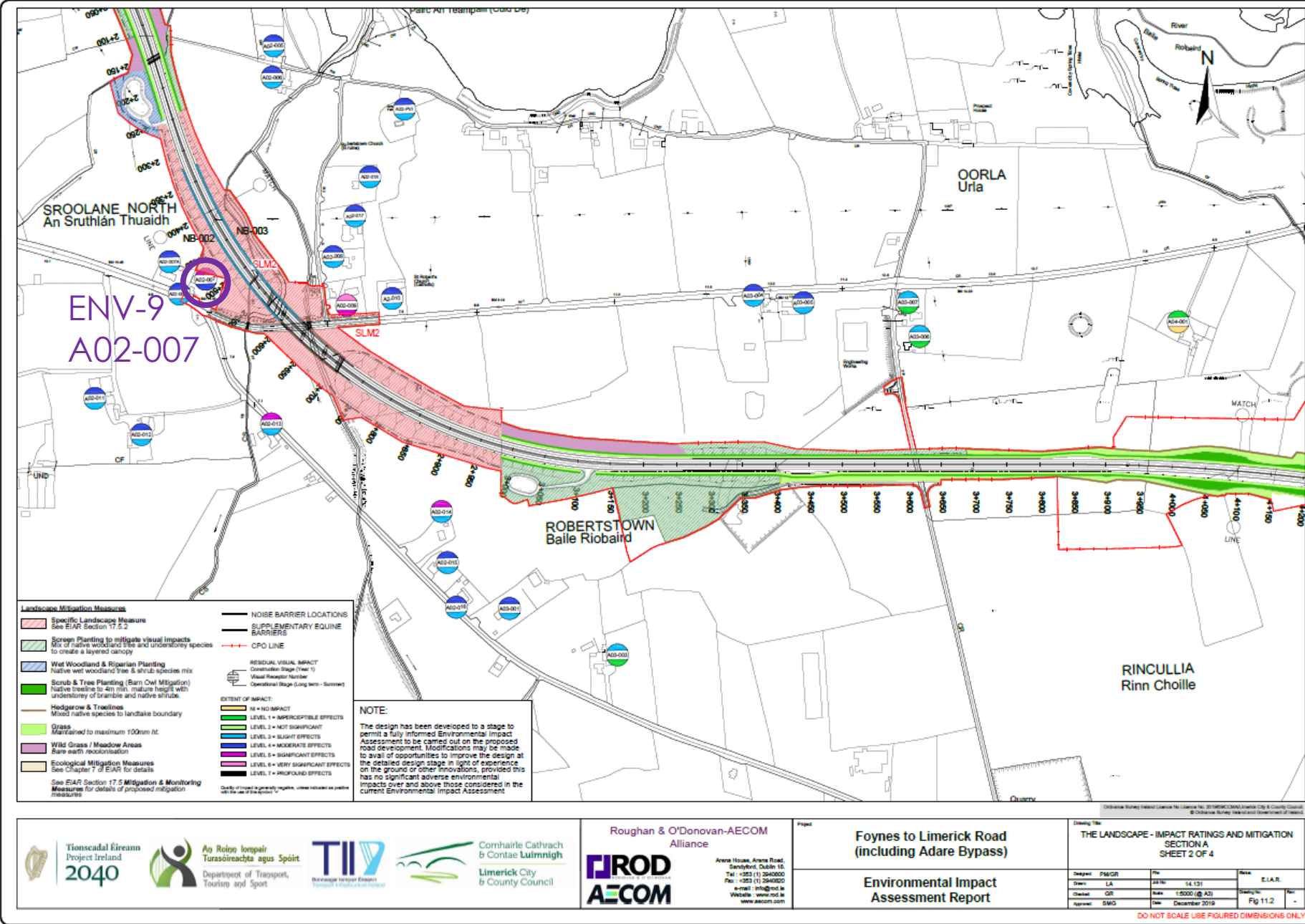


Fig. 11.2  
EIA Volume 3



4.  
RESPONSES TO  
SUBMISSIONS

4.3.5  
Landscape /  
Visual Effects  
on Properties



VP3  
View east on the N69 at Robertstown  
from the property boundary of A02-007  
EIAR Volume 5



4. RESPONSES TO SUBMISSIONS

4.3.5 Landscape / Visual Effects on Properties

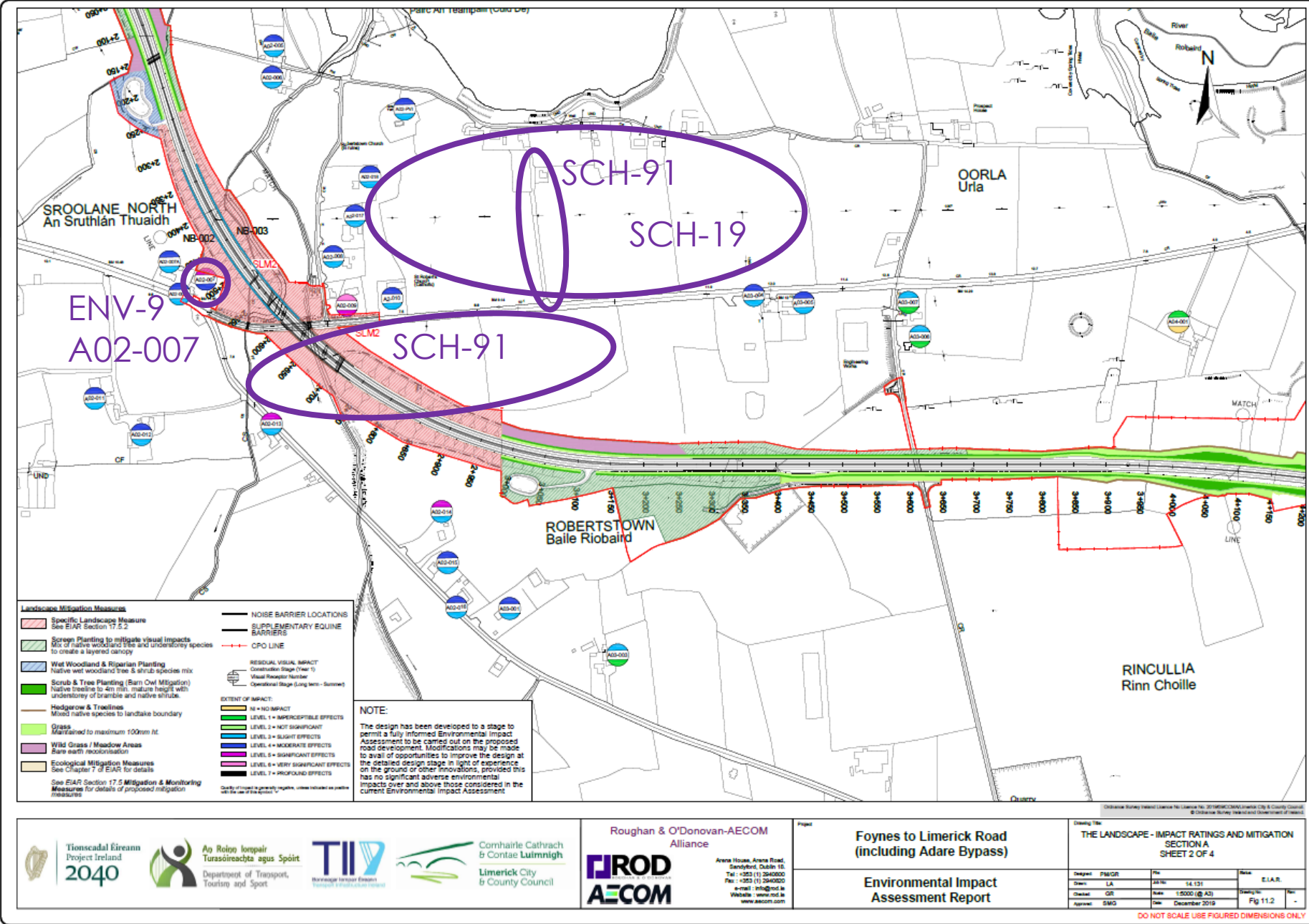


Fig. 11.2  
EIA Volume 3



4. RESPONSES TO SUBMISSIONS

4.3.5 Landscape / Visual Effects on Properties

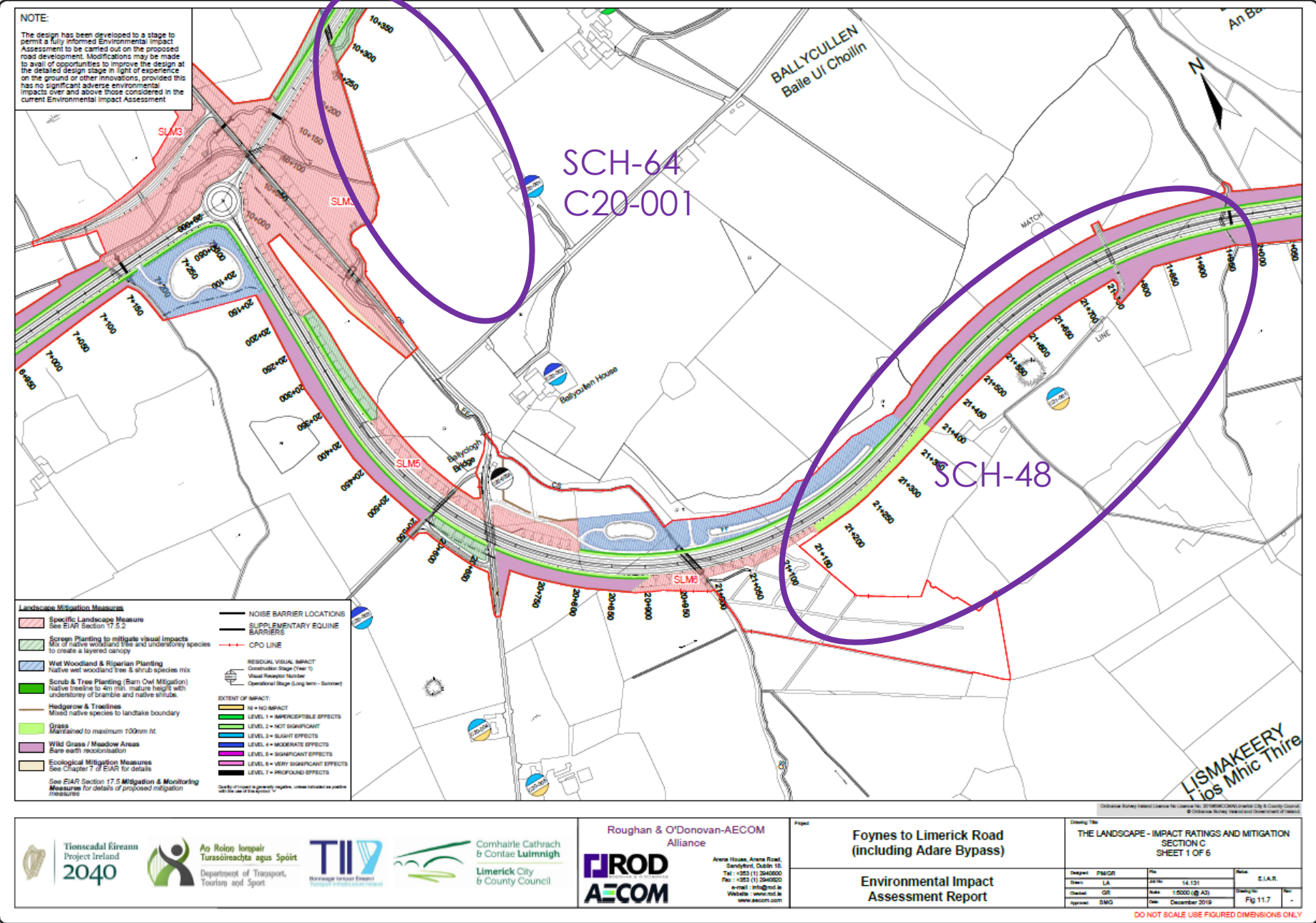


Fig. 11.7  
EIA Volume 3



#### 4.3.5 Landscape / Visual Effects on Properties





4. RESPONSES TO SUBMISSIONS

4.3.5 Landscape / Visual Effects on Properties

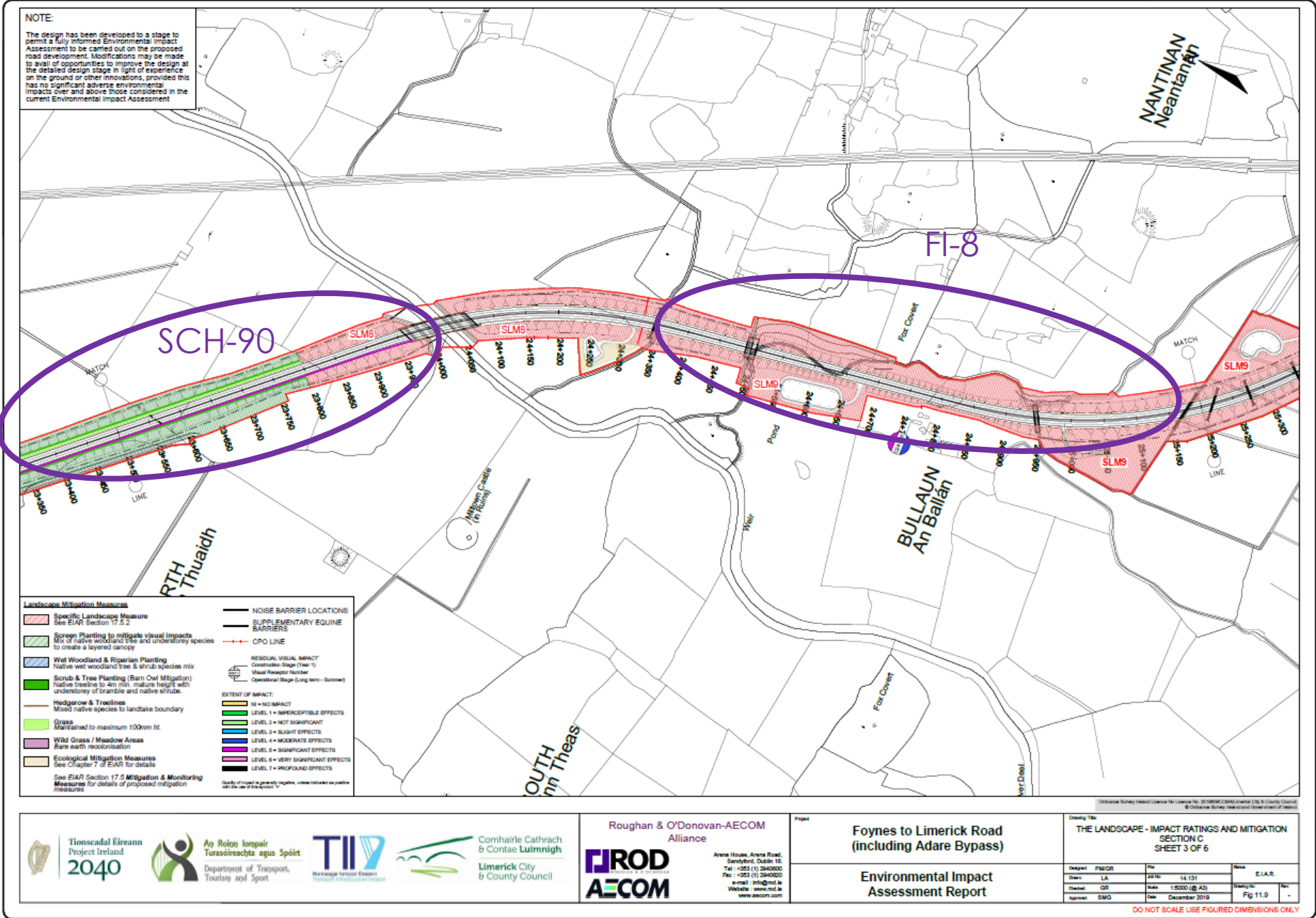
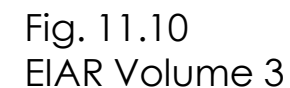


Fig. 11.9  
EIA Volume 3

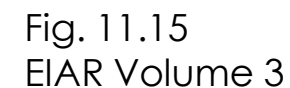


#### 4.3.5 Landscape / Visual Effects on Properties





## 4.2 Type and Extent of Landscape Mitigation Measures





4. RESPONSES TO SUBMISSIONS

4.3.5 Landscape / Visual Effects on Properties

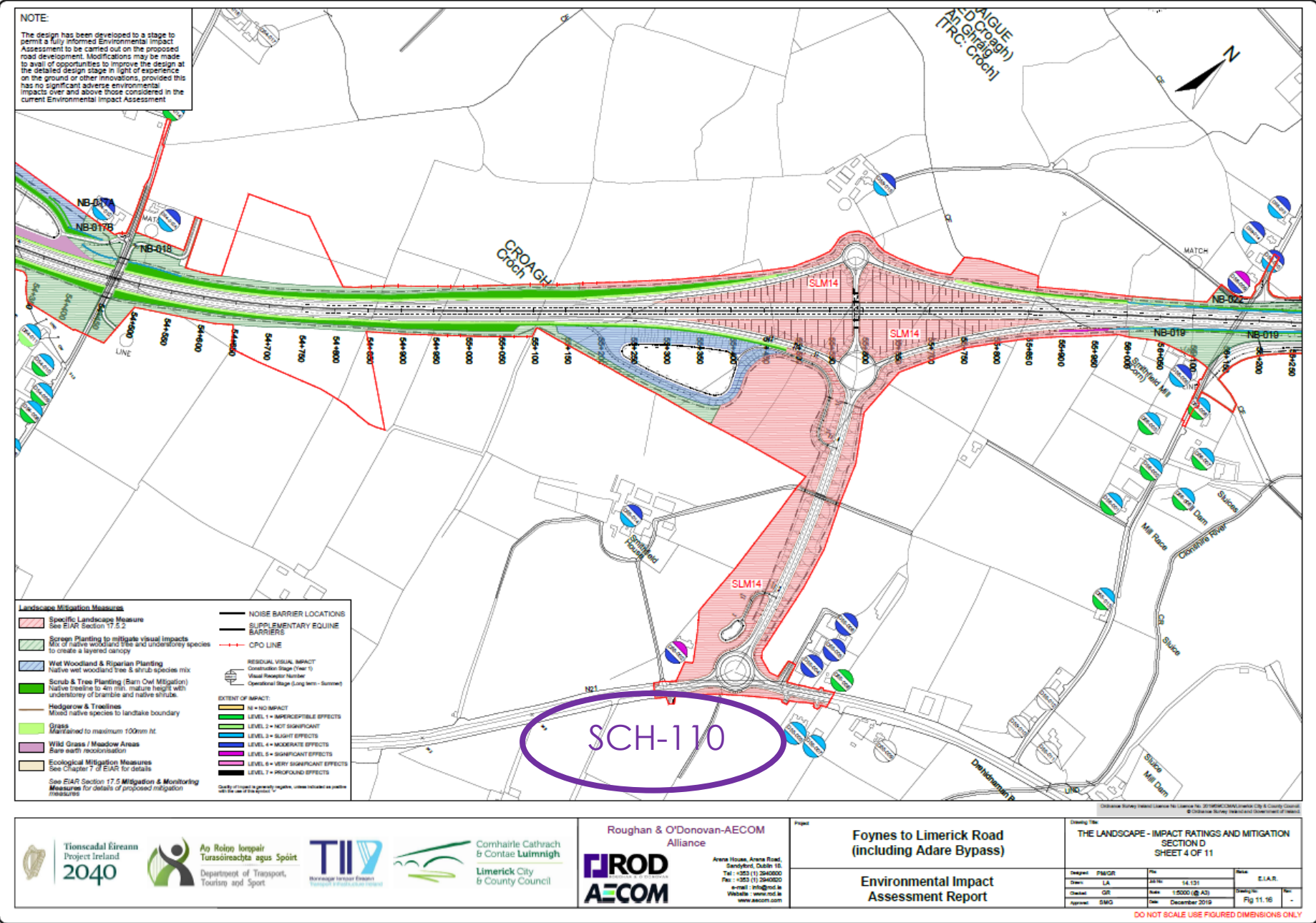


Fig. 11.16  
EIA Volume 3



4. RESPONSES TO SUBMISSIONS

4.3.5 Landscape / Visual Effects on Properties

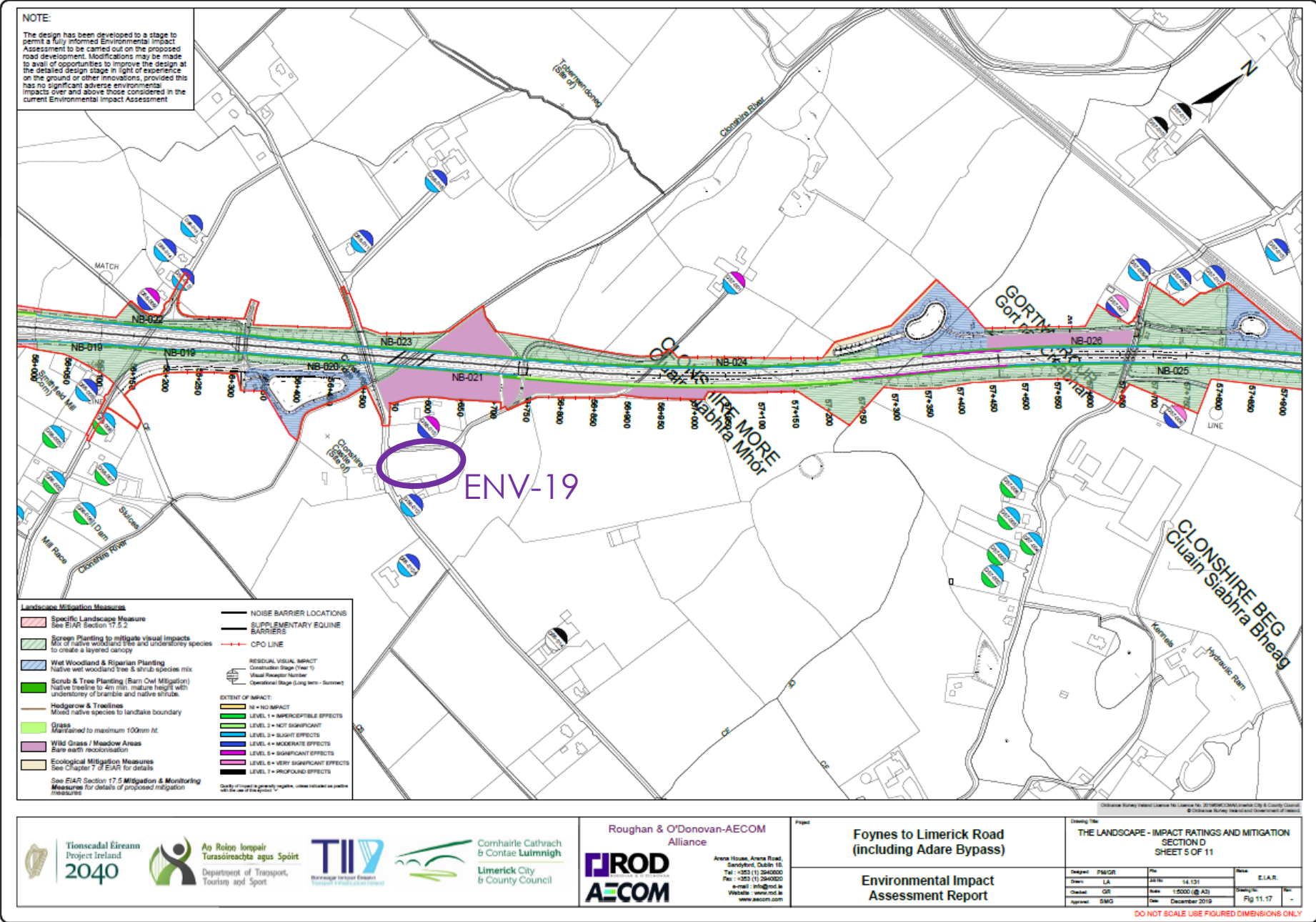


Fig. 11.17  
EIA Volume 3



Existing View



Montage: Pre-Mitigation View



Montage: Post-Mitigation View



#### 4. RESPONSES TO SUBMISSIONS

##### 4.3.5 Landscape / Visual Effects on Properties

VP20  
View west on L-8025 of  
Clonshire Castle  
EIAR Volume 5



4. RESPONSES TO SUBMISSIONS

4.3.5 Landscape / Visual Effects on Properties

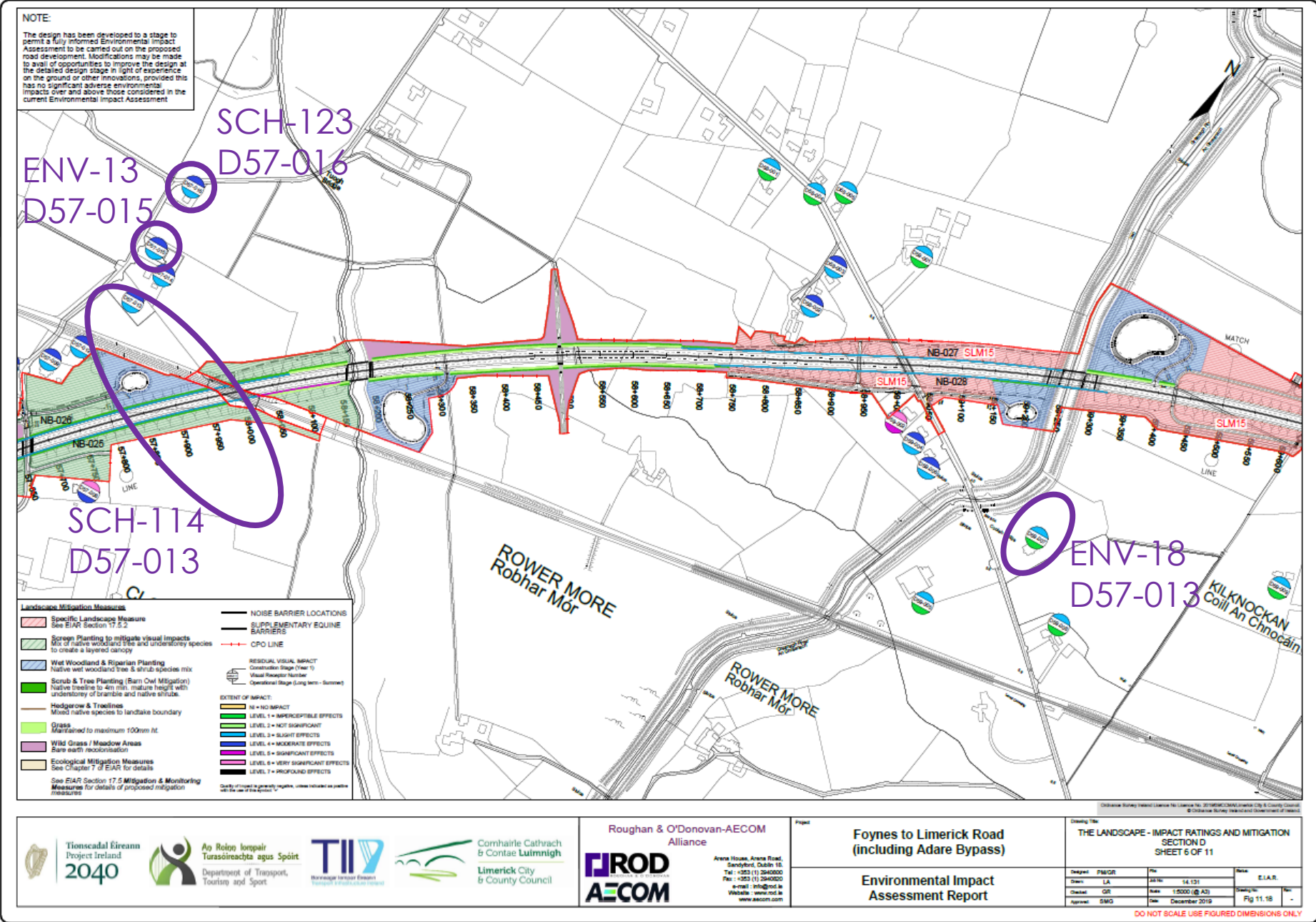


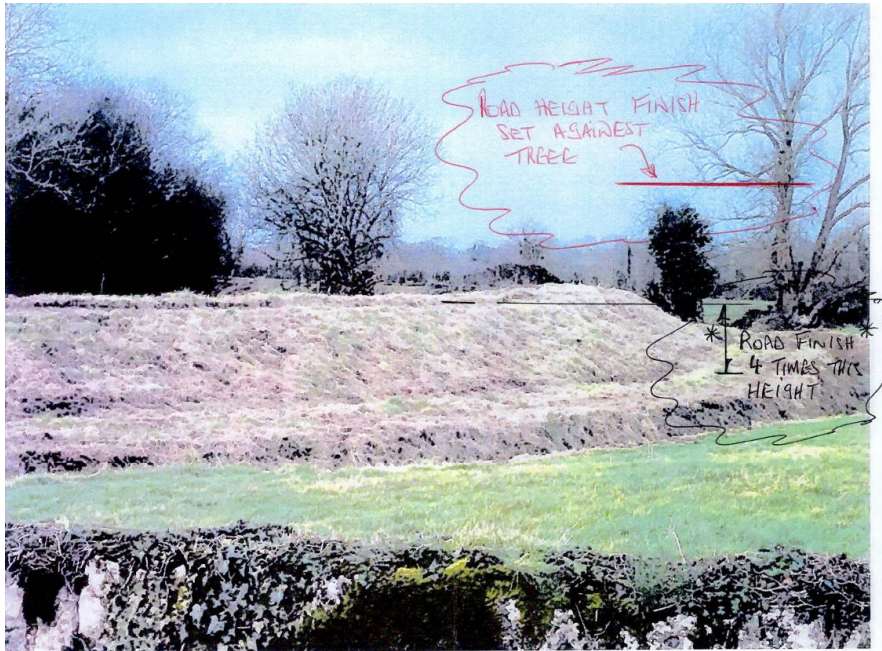
Fig. 11.18  
EIA Volume 3



## 4. RESPONSES TO SUBMISSIONS

### 4.3.5

Landscape /  
Visual Effects  
on Properties



*Marked-Up Photograph presented with ENV-18*



*Photograph from similar location on site, taken by author in January 2021.*



4.  
RESPONSES TO  
SUBMISSIONS

4.3.5  
Landscape /  
Visual Effects  
on Properties



*Photomontage presented for comparative purposes with River Greanagh and River Maigue bridges; photo taken from similar distance and elevation to structure of similar size.*



4. RESPONSES TO SUBMISSIONS

4.3.5 Landscape / Visual Effects on Properties

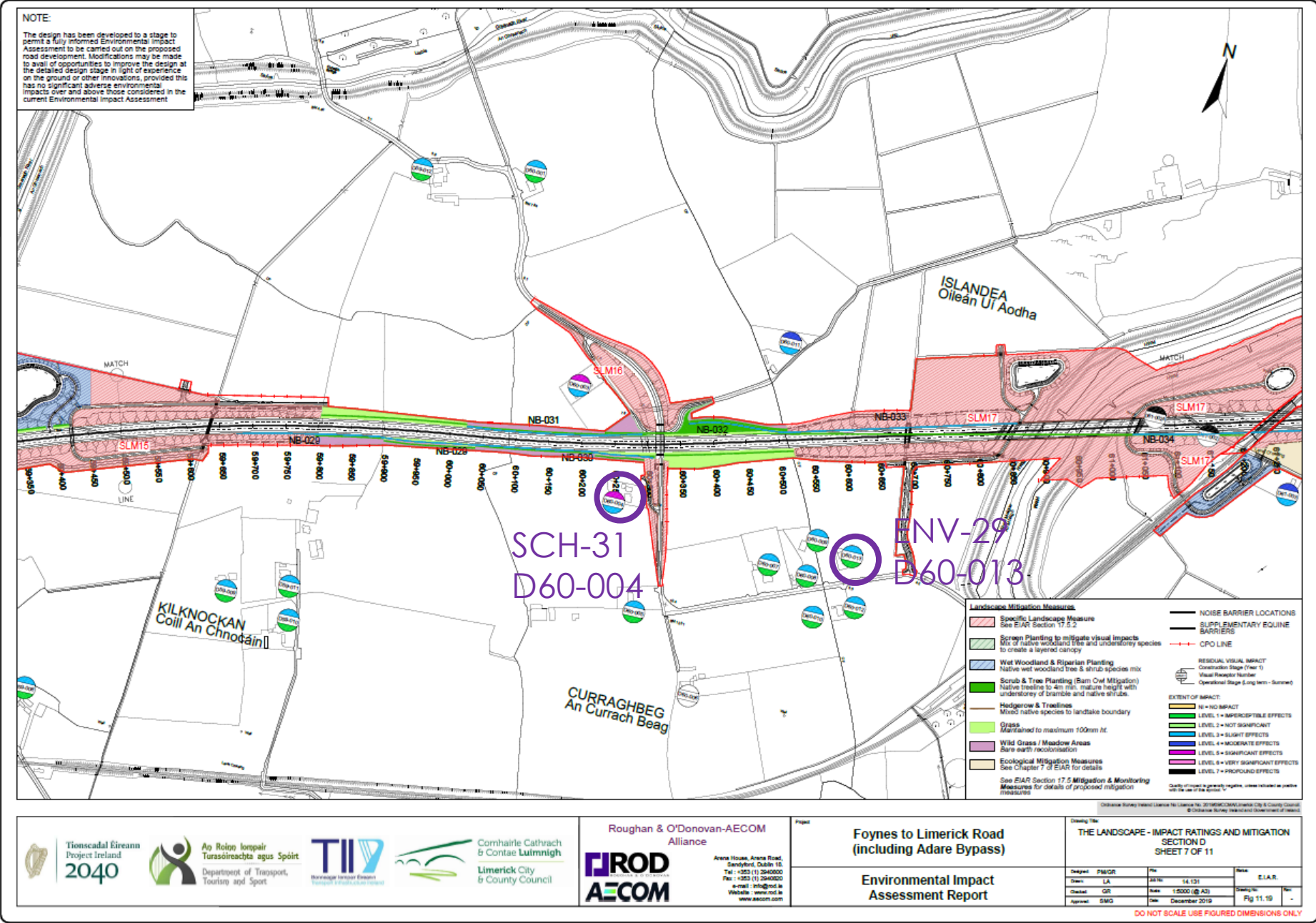


Fig. 11.19  
EIA Volume 3



4. RESPONSES TO SUBMISSIONS

4.3.5 Landscape / Visual Effects on Properties

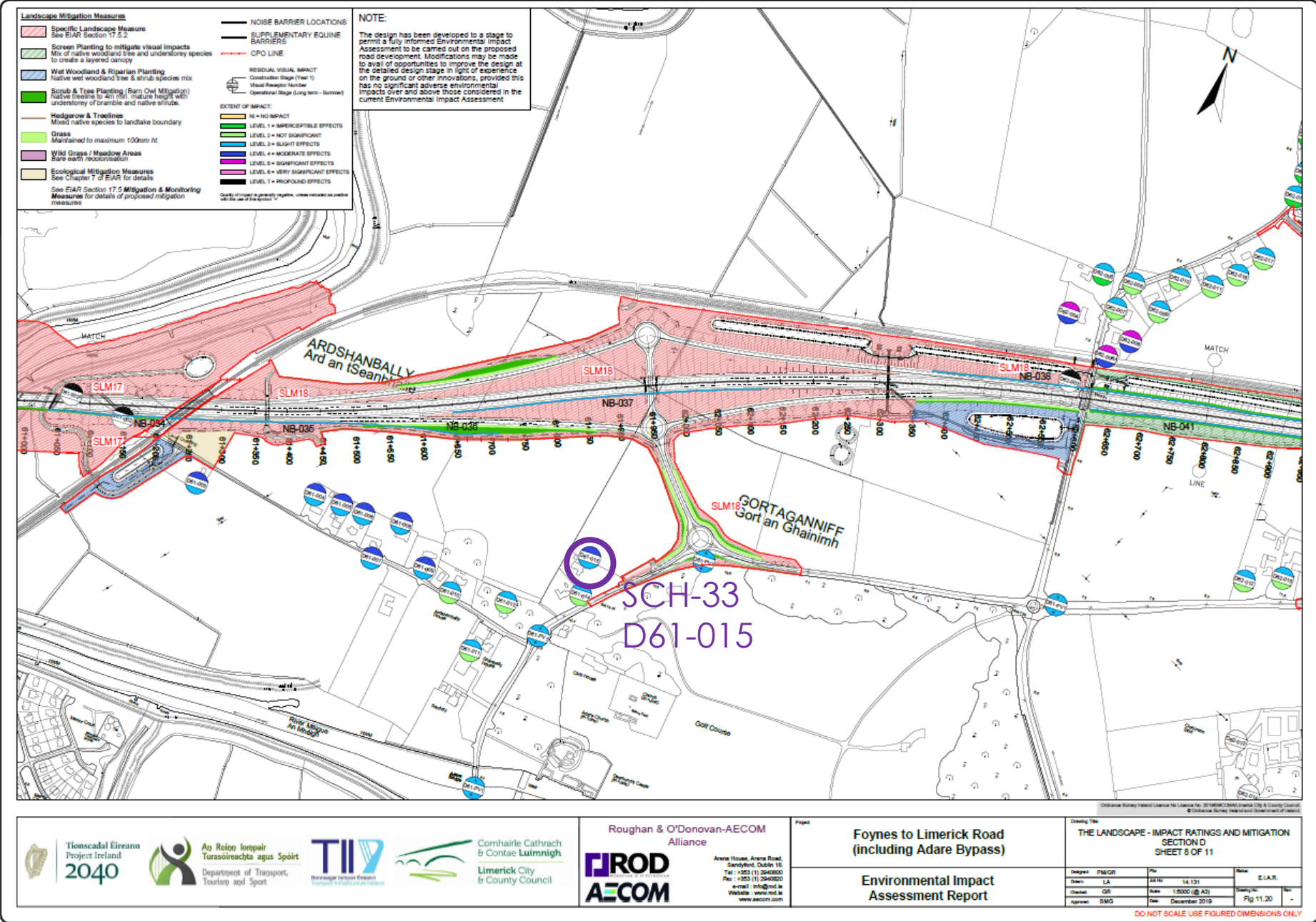


Fig. 11.20  
EIA Volume 3



4. RESPONSES TO SUBMISSIONS

4.3.5 Landscape / Visual Effects on Properties

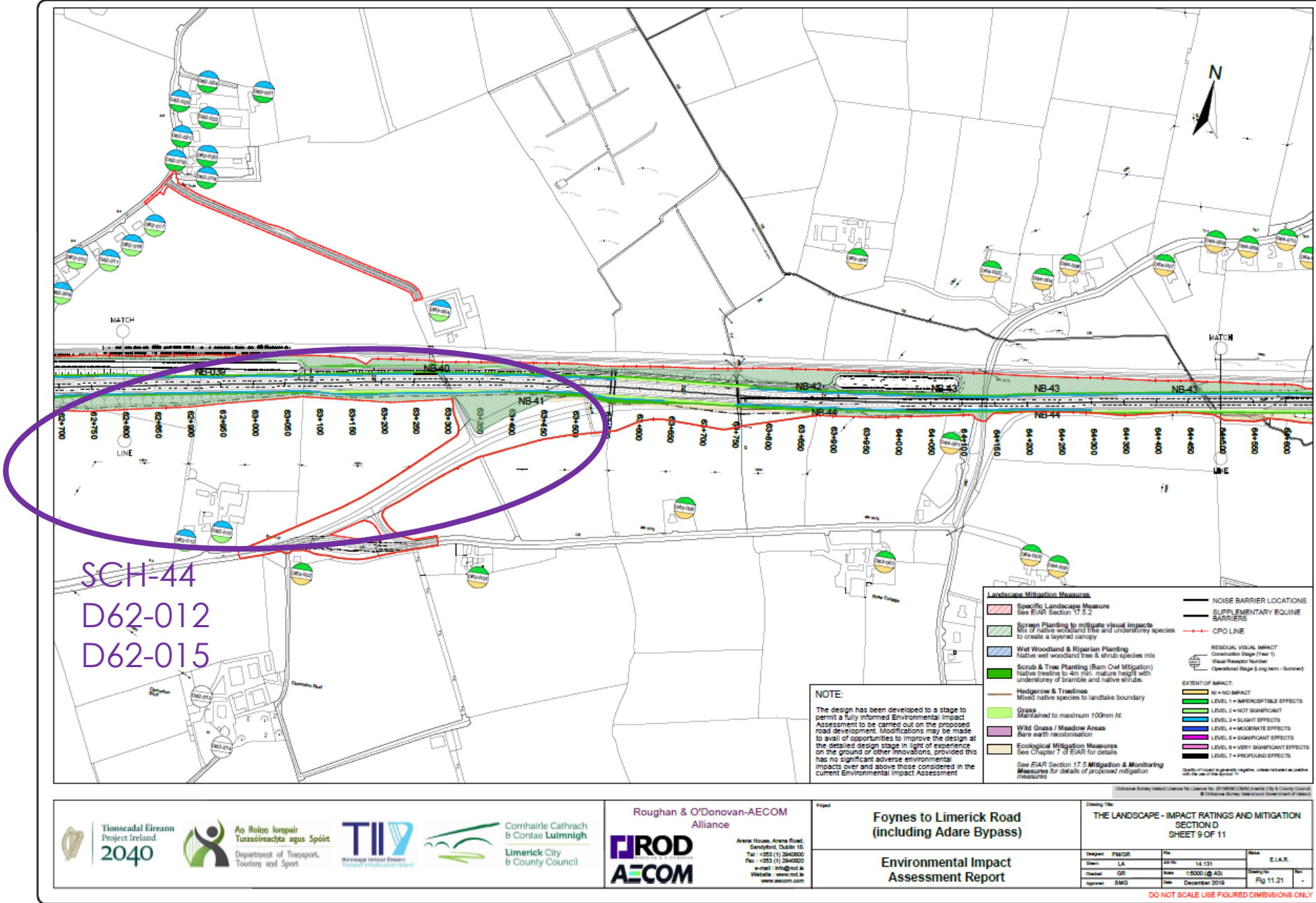


Fig. 11.21  
EIA Volume 3